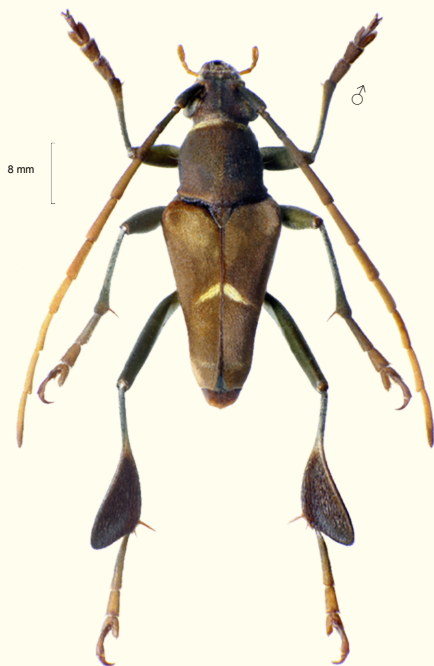


AICPIF04043601_E/MG



Phyllotodes obliquefasciatus Adlbauer, 2001

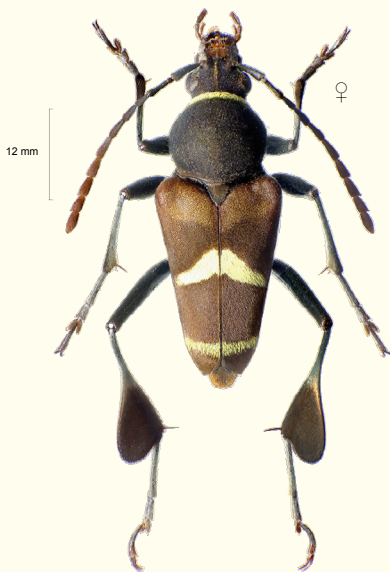
AICPIF04043601_E/MG



MADAGASCAR ce
Moramanga
17.12.1995

Phyllotodes obliquefasciatus Adlbauer, 2001

AICPIF04043601_E/MG



Phyllotodes obliquefasciatus Adlbauer, 2001

AICPIF04043601_E/MG



MADAGASCAR ce
Moramanga
17.12.1995

Phyllotodes obliquefasciatus Adlbauer, 2001